

*Putting the*  
**Public**  
*back in*  
**Public Works**

Bruce Haden



ISDEMİR







**Mitigation**

*versus*

**Integration**

*Or even  
better:*

**Inspiration**



Hyperion Sewage Treatment Plant Reimagining (Architect: Taalman Koch)  
Los Angeles, CA



Place *not*  
Infrastructure



Riparian Renovation of Wilshire Boulevard(Architect: Rios, Clementi, Hale)  
Los Angeles, CA

80/20



333 JUNE 13 1917 PANORAMA

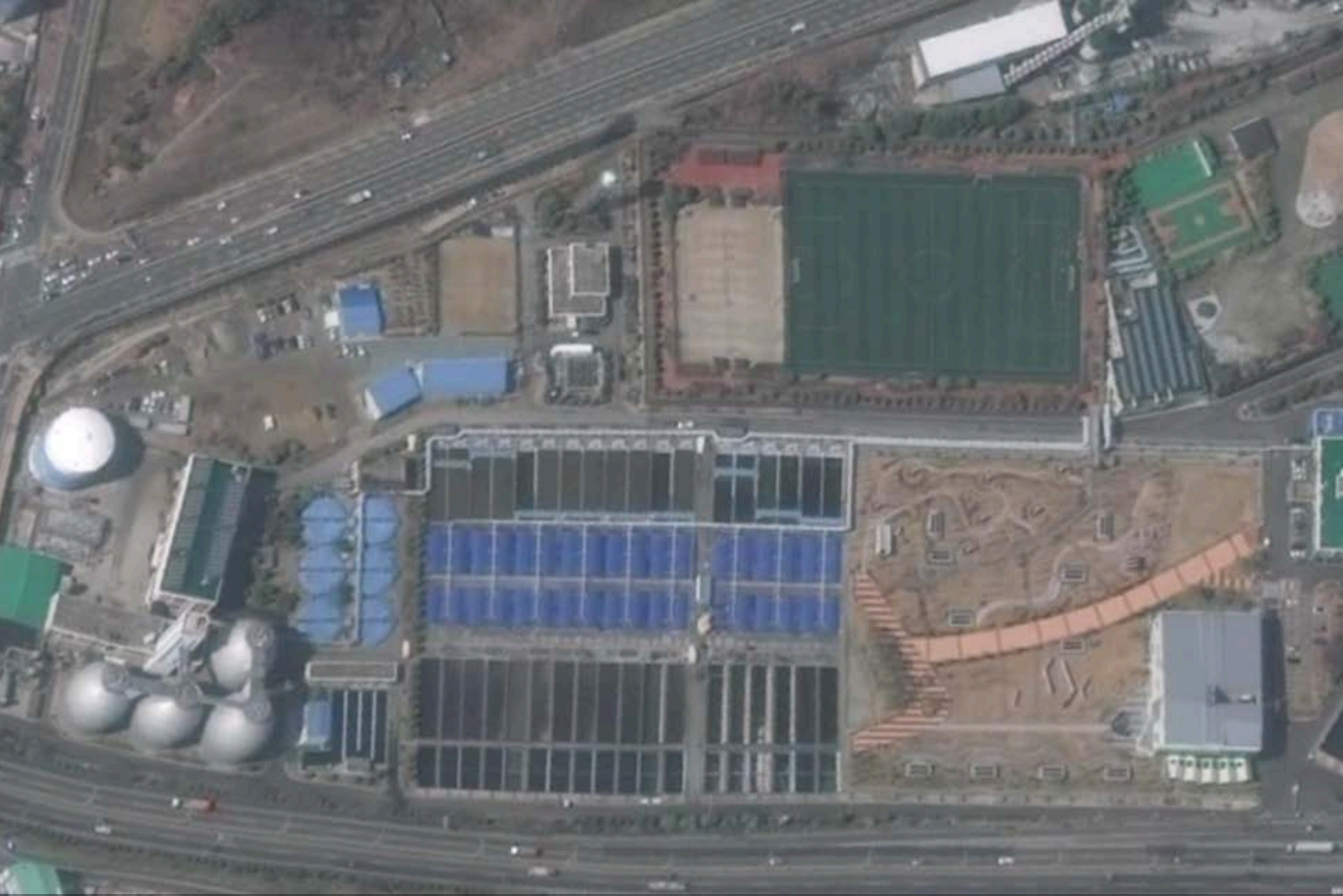
**10**  
**OPPORTUNITIES**  
**for**  
**Rethinking**  
**Public Works**  
**Design**

**Good Ideas can  
Sound Weird**

# OPPORTUNITY 1

Site

Access



Sunyeong Sewage Treatment Plant  
Busan, Korea





Sunyeong Sewage Treatment Plant  
Busan, Korea

# OPPORTUNITY 2

## Creating Links



Jack Darling / Lorne Park Water Treatment Retrofit (Architect: Brown and Storey)  
Toronto, ON



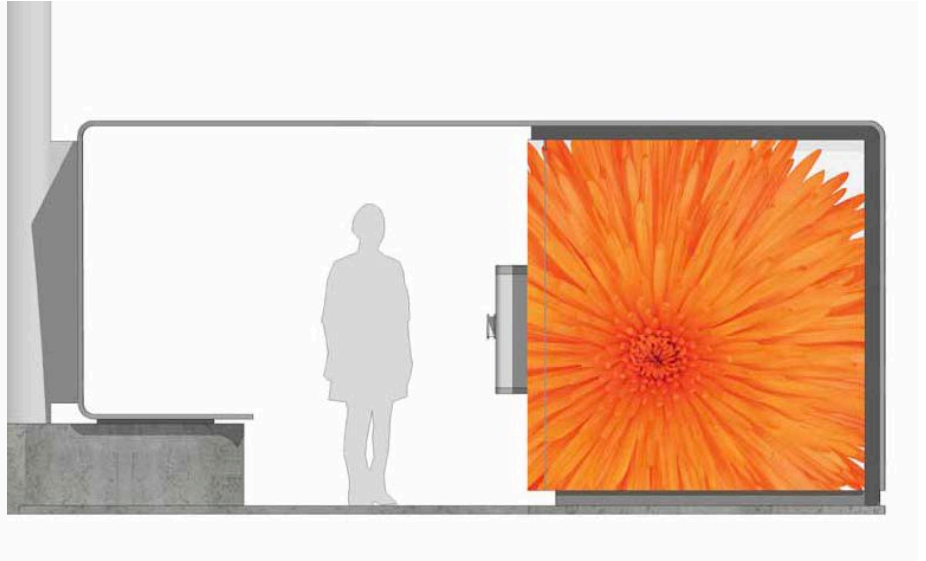
Jack Darling / Lorne Park Water Treatment Retrofit (Architect: Brown and Storey)  
Mississauga, ON

## **OPPORTUNITY 3**

**Solving Site  
Specific  
Problems**



Barnston Maple Ridge Pump Station (Architect: DIALOG)  
Maple Ridge, BC



Cell Tower and Electric Vehicle Charging Stations (Architect: DIALOG)  
Vancouver, BC

## OPPORTUNITY 4

# Complementary Uses



**Retail ?**

**Educational ?**

**Office ?**



COOPAGRI  
BRETAGNE



# OPPORTUNITY 5

## Recreation

**Grand Opening**  
 Saturday, September 24, 2011 9:00 a.m. to 4:00 p.m.



Environmental Education and Community Center

Coming Fall 2011

# Brightwater Center

The home of your new

- Park
- Community Gathering Place
- Environmental Education Learning Center

art trails

exhibits

nature preserve

indoor and outdoor classrooms

picnic spots

meeting places

wildlife

lots of opportunities to connect with your environment



King County



Friends of the Hidden River

BrightwaterCenter@kingcounty.gov  
 www.kingcounty.gov/  
 brightwatercenter

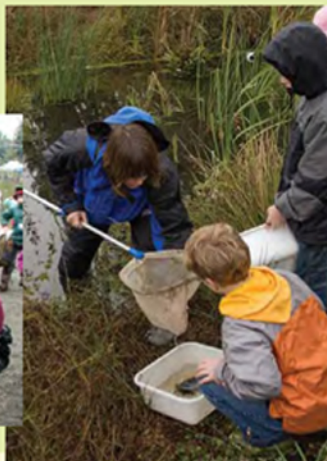


	walking trail
	elevation change
	overlook
	restored wetland and/or salmon habitat
	treatment plant

Feet 0 200 400 600

## Your new park 72 acres of public open space!

- Open dawn to dusk
- Three miles of walking trails
- Overlooks and picnic spots
- Public art
- Salmon, bird, and amphibian habitats
- Stewardship opportunities



North Habitat

Brightwater Center and the surrounding park were built as mitigation for the treatment plant. Over 60 community groups, neighbors, and educators asked for a park, gathering place, and environmental learning center. These facilities will be open to the public as of September 24, 2011.





Waste to Energy Plant (Architect: BIG)  
Copenhagen, Denmark



Waste to Energy Plant (Architect: BIG)  
Copenhagen, Denmark





Waste to Energy Plant (Architect: BIG)  
Copenhagen, Denmark

# OPPORTUNITY 6

Sustainability /  
Energy  
Exchange



SEFC District Energy Plant (Architect: Walter Francis, Artist: Pechet + Robb)  
Vancouver, BC



# OPPORTUNITY 7

## Education



Brightwater Clean-Water Treatment Facility (Architect: Mithun)  
Woodinville, WA



[Home](#) » [Building Systems](#) » [Electrical Systems](#) » [Campus Power](#)

## Campus Power

[Campus Power](#)

[Power Metering](#)

[Power Use](#)

[The Elevator](#)

The power use on Queen's Campus makes up about 25% of the power used in the whole of Kingston. An aggressive energy-management plan is in place to reduce the power-use of Queen's, including a window-refit program and the use of co-generation for power. Check out the power-use profiles of our buildings!

### LINKS

[Queen's Solar Lab](#)

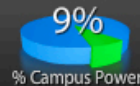
### GREEN TIPS



Thaw, or partially thaw, frozen foods in the refrigerator before cooking.

n/a

### Botterell Hall



Click for graphs



231

Click on a building...

Total Campus Power Use: 9,696,513 watts





[Home](#) » [Building Systems](#) » [Electrical Systems](#) » [Campus Power](#)

## Campus Power

[Campus Power](#)[Power Metering](#)[Power Use](#)[The Elevator](#)

The power use on Queen's Campus makes up about 25% of the power used in the whole of Kingston. An aggressive energy-management plan is in place to reduce the power-use of Queen's, including a window-refit program and the use of co-generation for power. Check out the power-use profiles of our buildings!

### LINKS

[Queen's Solar Lab](#)

### GREEN TIPS



If you're shopping for a new fixture, remember that a fixture with one bulb gives you more light than a similar one with several bulbs that add up to the same total wattage. So for example, one 100W bulb gives off 1 1/2 times as much light as four 25W bulbs. And you only have one bulb to buy.

n/a

### Beamish-Munro Hall (ILC)





# OPPORTUNITY 8

## Public Art



Illuminated Cranes (Lighting: Dean Skira)  
Pula, Croatia



Water Sky Garden (Artist: Janet Echelman)  
Richmond, BC



East Van Sculpture (Artist: Ken Lum)  
Vancouver, BC



Vancouver Heritage Foundation "Wall" at the CBC (Architect: DIALOG)  
Vancouver, BC

# OPPORTUNITY 9

Future  
Reuse



Battersea Power Station (Architect: Giles Gilbert Scott)  
London, UK



Tate Modern Gallery (Architect: Herzog de Meuron)  
London, UK





ARROW No. 1  
STORAGE ASSEMBLY  
YARD



# OPPORTUNITY 10

Great  
Architecture



Dal Grauer Substation, Burrard Street (Architect: Thompson, Berwick and Pratt)  
Vancouver, BC



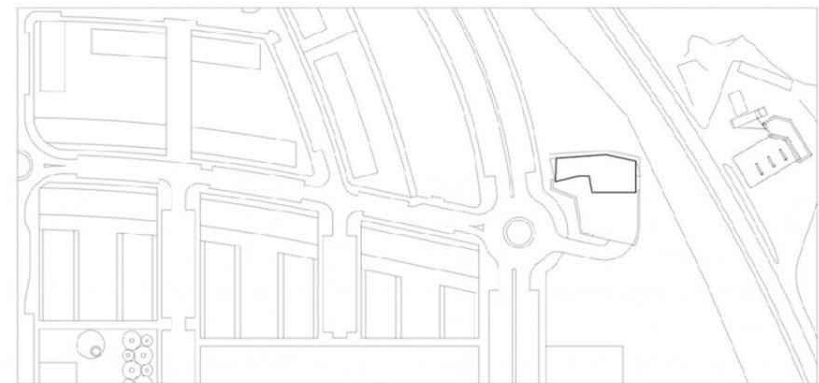
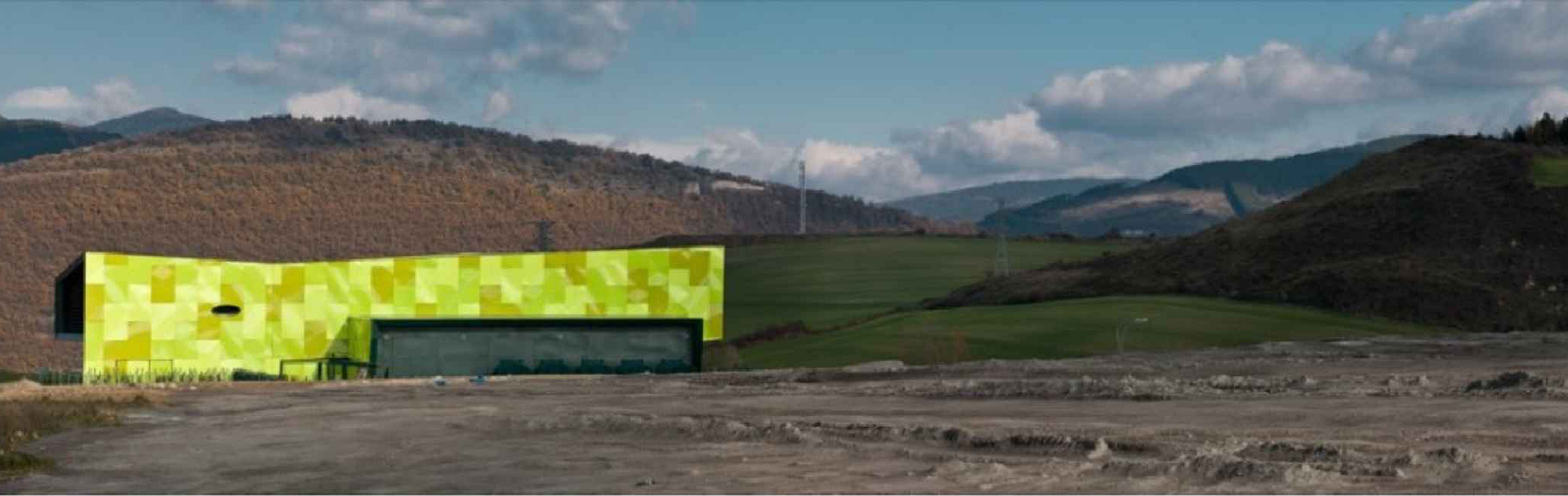
Brightwater Clean-Water Treatment Facility (Architect: Mithun)  
Woodinville, WA



Brightwater Clean-Water Treatment Facility  
Woodinville, WA



St. Germain Aqueducts & Sewerage Headquarters (Architect: ACDF)  
St-Hubert, Quebec



PLANTA SITUACIÓN



Urban Waste Collection Centre (Architect: Vaillo + Irigaray)  
Huarte, Spain





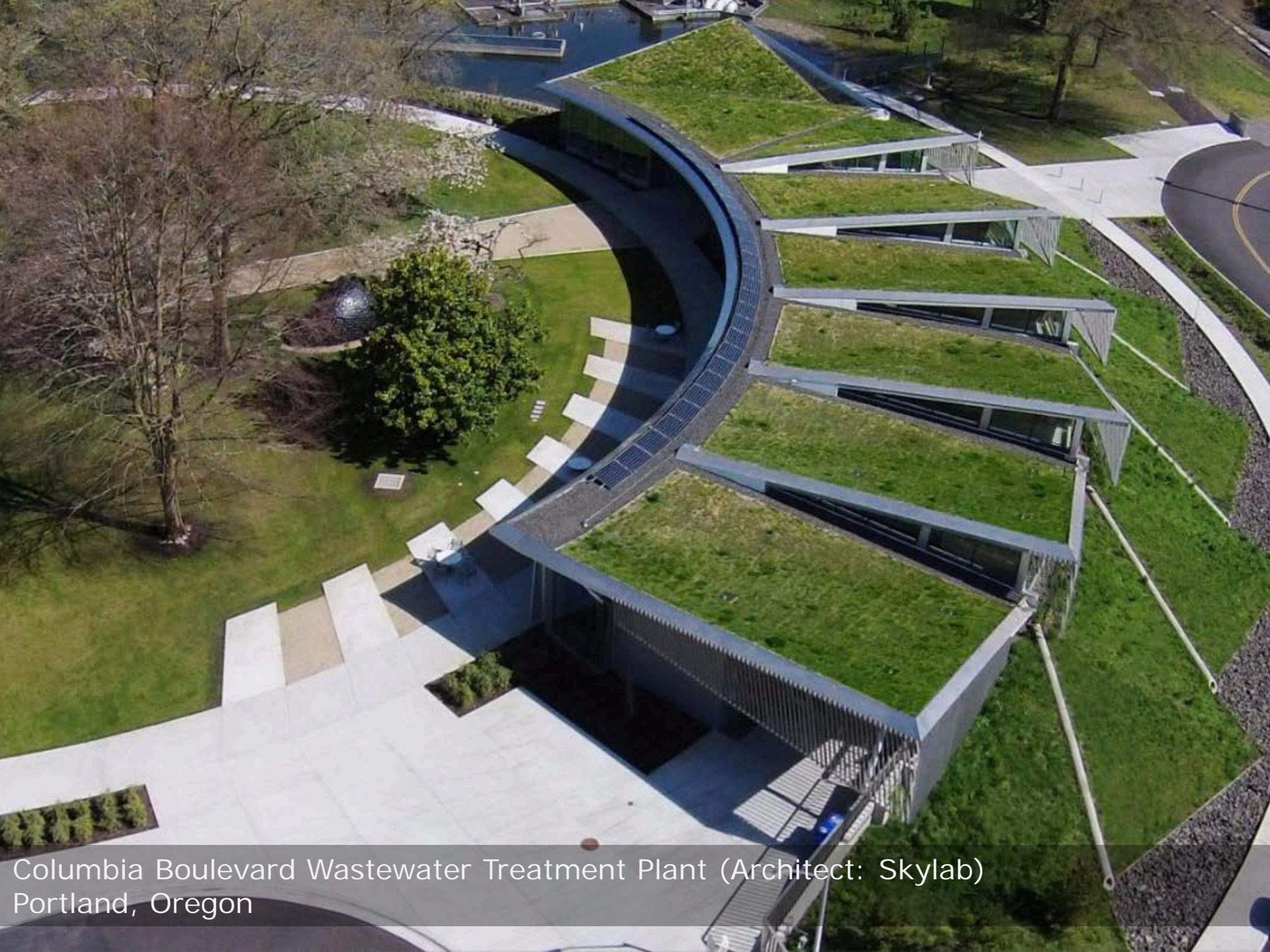
Newton Creek Wastewater Treatment Plant (Architect: ENNEAD)  
Brooklyn, NY



Newton Creek Wastewater Treatment Plant (Architect: ENNEAD)  
Brooklyn, NY



Water Treatment Plant  
Paris, France



Columbia Boulevard Wastewater Treatment Plant (Architect: Skylab)  
Portland, Oregon



Columbia Boulevard Wastewater Treatment Plant (Architect: Skylab)  
Portland, Oregon



Columbia Boulevard Wastewater Treatment Plant (Architect: Skylab)  
Portland, Oregon



UBC District Energy Plant (Architect: DIALOG)  
Vancouver, BC



Sewage Pump Station (Architect: CF Moller)  
Copenhagen, Denmark





1901 Sewage Pump Station (Architect: Ludvig Fenger)  
Copenhagen, Denmark



Biomass Power Plant (Architect: Thomas Heatherwick)  
Stockton on Tees, UK



Nanaimo Water Treatment Plant (Architect: DIALOG)  
Nanaimo, BC





Like Comment

## Seattle-area sewage plant now open for weddings

King County WTD, a Clearwater-based contractor, has opened the Brightwater Center for up to 260 people, our LEED Platinum certified Brightwater Center has everything you need for your wedding reception or special event. <http://www.kingcountytv.gov/environment/brightwater-center/facility/rental.aspx>

About Time  
Shares with

**Shepard Smith**  
**REPORTING**

Open Photo Viewer

Download

