

# Capital Regional District Francis/King Regional Park



## Park Amenities

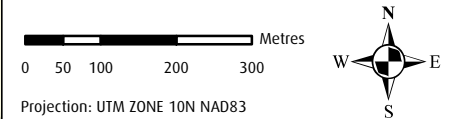
- |                    |               |
|--------------------|---------------|
| Accessible Parking | Bicycle Rack  |
| Accessible Shelter | Information   |
| Accessible Toilet  | Nature Centre |
| Accessible Trail   | Picnic Area   |

## Trails By Designated Use

- Hiking Trail
- Hiking/Cycling/Equestrian Trail
- ..... Hiking/Equestrian Trail
- - - - - Unofficial Trail (Not Maintained)

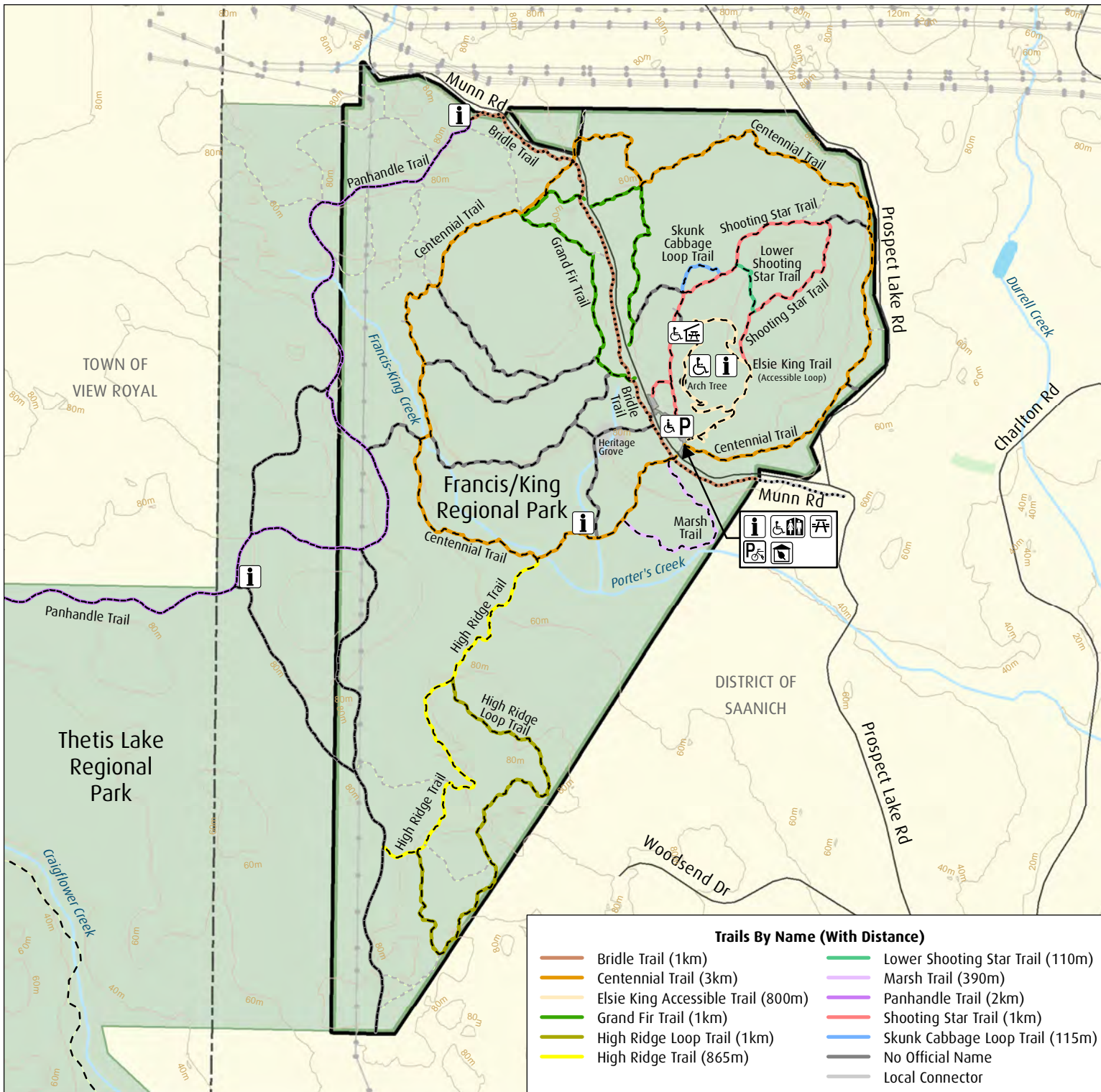
## Map Features

- Road
- Hydro Wire
- Municipal Boundary
- Contour (20m interval)
- River/Creek
- Wetland/Lake/Reservoir
- Francis/King Regional Park
- Other Regional Park
- Municipal Park



## Disclaimer

**Important** This map is for general information purposes only. The Capital Regional District (CRD) makes no representations or warranties regarding the accuracy or completeness of this map or the suitability of the map for any purpose. **This map is not for navigation.** The CRD **will not be liable** for any damage, loss or injury resulting from the use of the map or information on the map and the map may be changed by the CRD at any time.



## Trails By Name (With Distance)

- |                                    |                                  |
|------------------------------------|----------------------------------|
| Bridle Trail (1km)                 | Lower Shooting Star Trail (110m) |
| Centennial Trail (3km)             | Marsh Trail (390m)               |
| Elsie King Accessible Trail (800m) | Panhandle Trail (2km)            |
| Grand Fir Trail (1km)              | Shooting Star Trail (1km)        |
| High Ridge Loop Trail (1km)        | Skunk Cabbage Loop Trail (115m)  |
| High Ridge Trail (865m)            | No Official Name                 |
|                                    | Local Connector                  |